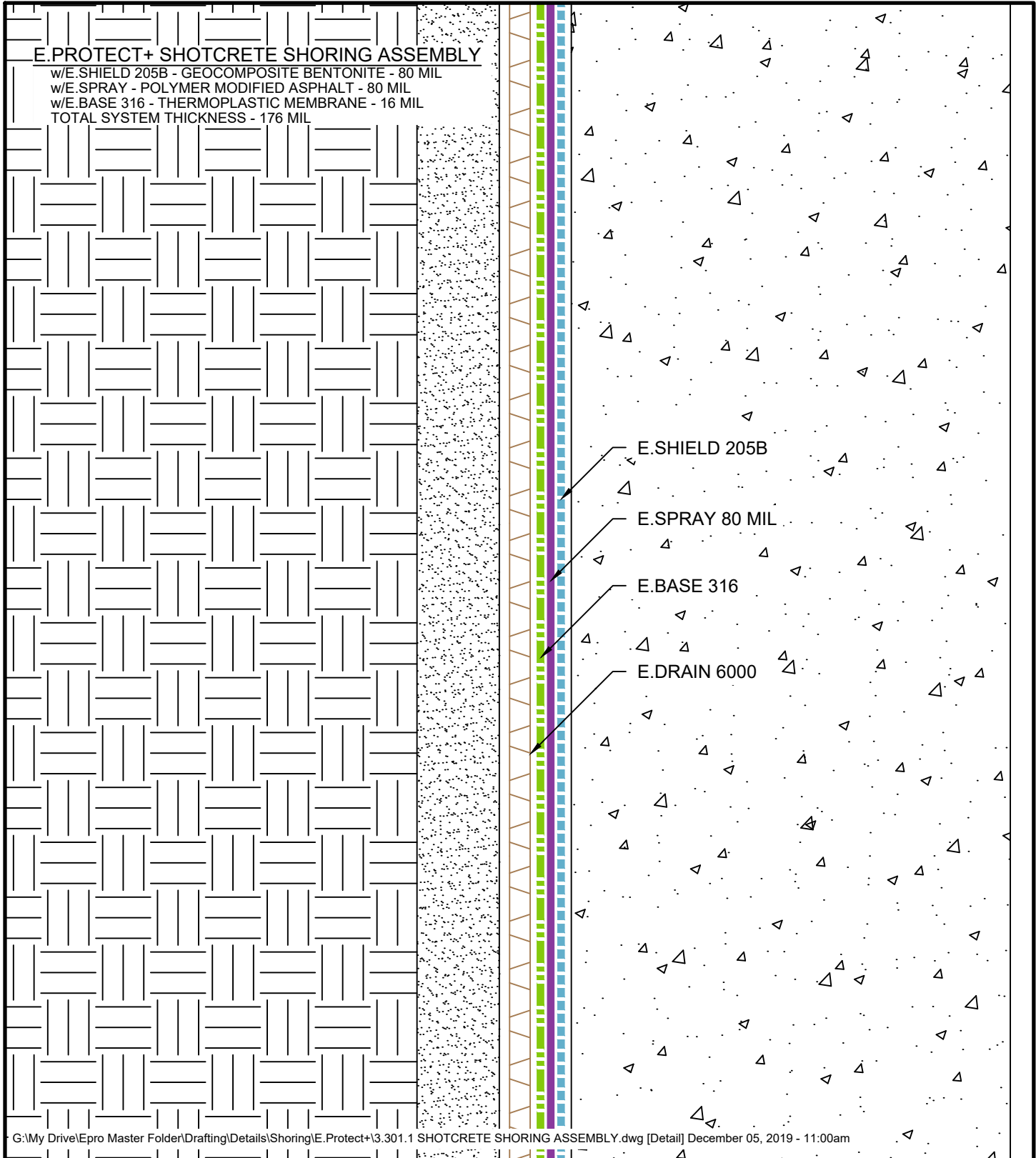




E.PROTECT+ SHOTCRETE SHORING ASSEMBLY

w/E.SHIELD 205B - GEOCOMPOSITE BENTONITE - 80 MIL
 w/E.SPRAY - POLYMER MODIFIED ASPHALT - 80 MIL
 w/E.BASE 316 - THERMOPLASTIC MEMBRANE - 16 MIL
 TOTAL SYSTEM THICKNESS - 176 MIL



G:\My Drive\Epro Master Folder\Drafting\Details\Shoring\E.Protect+\3.301.1 SHOTCRETE SHORING ASSEMBLY.dwg [Detail] December 05, 2019 - 11:00am

SHOTCRETE SHORING ASSEMBLY

	SYSTEM NAME	DRAWING NUMBER	
	E.PROTECT+	3.301.1	
	DRAFTER	DATE	
	RJT	12/05/19	

AS A SUPPLIER OF FINISHED PRODUCTS ONLY, EPRO SERVICES, INC. DOES NOT ASSUME RESPONSIBILITY FOR ERRORS IN DESIGN, ENGINEERING OR DIMENSIONS. THE PROJECT TEAM MUST VERIFY ALL DIMENSIONS AND SUITABILITY OF DETAILS. THE PRODUCTS LISTED ARE TRADEMARKS OF EPRO SERVICES, INC.

NTS

PAGE 1 OF 1