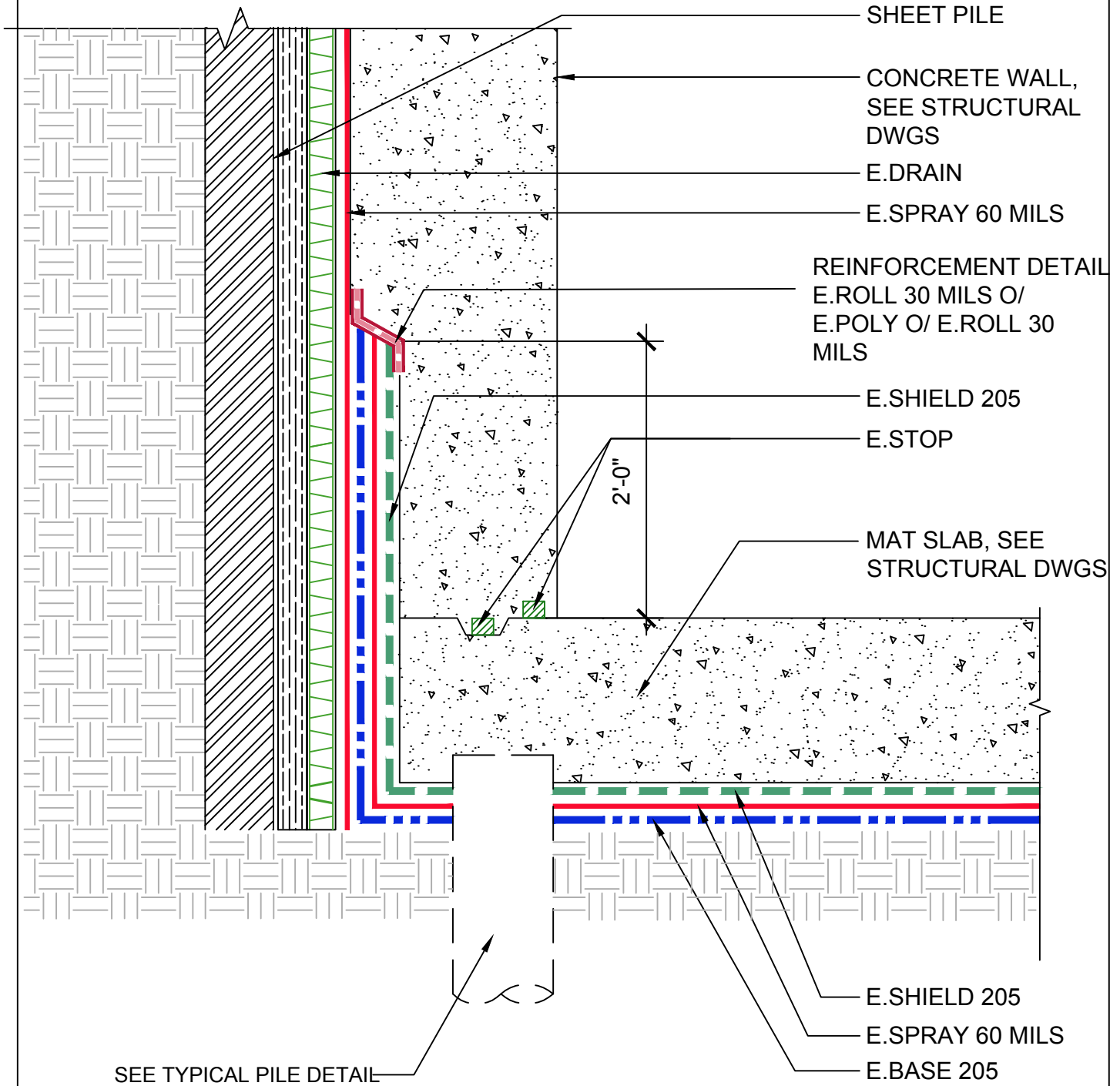


NOTE: WATERSTOPS MUST BE FULLY ENCAPSULATED WITH CONCRETE A MIN OF 3" ON BOTH SIDES



SYSTEM  
**E.PROFORMANCE**

OLD REFERENCE

NOT TO SCALE  
THICKNESS OF EPRO PRODUCTS ARE ENLARGED FOR CLARITY

**UNDERSLAB TRANSITION MAT SLAB TO SHEET PILE SHORING AND PILE FOUNDATION**

AS A SUPPLIER OF FINISHED PRODUCTS ONLY, EPRO SERVICES, INC. DOES NOT ASSUME RESPONSIBILITY FOR ERRORS IN DESIGN, ENGINEERING OR DIMENSIONS. THE PROJECT TEAM MUST VERIFY ALL DIMENSIONS AND SUITABILITY OF DETAILS. THE PRODUCTS LISTED ARE TRADEMARKS OF EPRO SERVICES, INC.

REVISIONS	ISSUED DATE	DRAWING NO.
	6.29.18	1.140.3.1