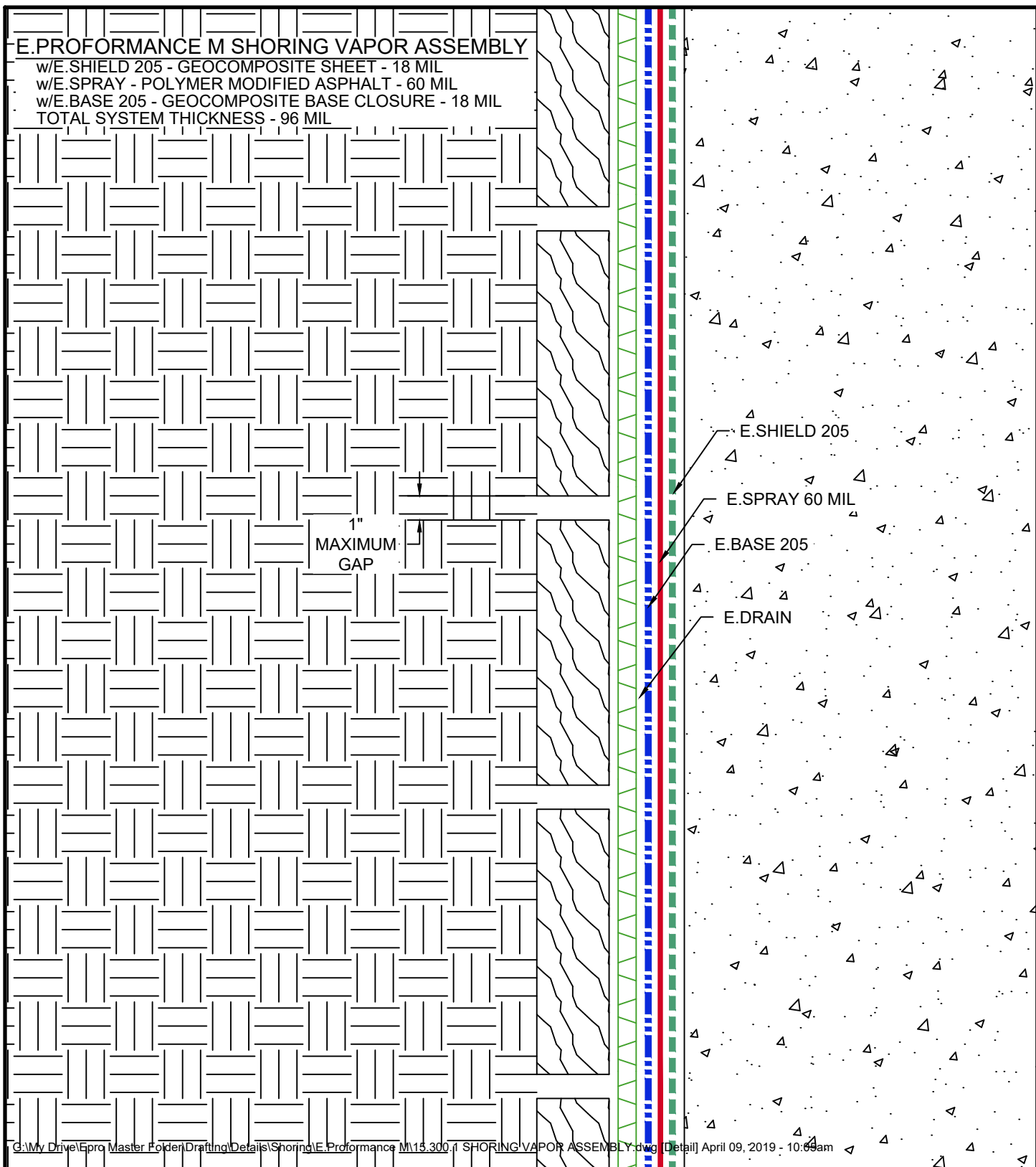


E.PROFORMANCE M SHORING VAPOR ASSEMBLY

w/E.SHIELD 205 - GEOCOMPOSITE SHEET - 18 MIL
 w/E.SPRAY - POLYMER MODIFIED ASPHALT - 60 MIL
 w/E.BASE 205 - GEOCOMPOSITE BASE CLOSURE - 18 MIL
 TOTAL SYSTEM THICKNESS - 96 MIL





1"
 MAXIMUM
 GAP

E.SHIELD 205
 E.SPRAY 60 MIL
 E.BASE 205
 E.DRAIN

G:\My Drive\Epro Master Folder\Drafting\Details\Shoring\E.Proformance M15.300.1 SHORING VAPOR ASSEMBLY.dwg [Detail] April 09, 2019 - 10:09am

SHORING VAPOR ASSEMBLY

	SYSTEM NAME	DRAWING NUMBER	
	E.PROFORMANCE M	15.300.1	
	DRAFTER	DATE	
	TSH	04/09/19	

AS A SUPPLIER OF FINISHED PRODUCTS ONLY, EPRO SERVICES, INC. DOES NOT ASSUME RESPONSIBILITY FOR ERRORS IN DESIGN, ENGINEERING OR DIMENSIONS. THE PROJECT TEAM MUST VERIFY ALL DIMENSIONS AND SUITABILITY OF DETAILS. THE PRODUCTS LISTED ARE TRADEMARKS OF EPRO SERVICES, INC.

NTS

PAGE 1 OF 1