



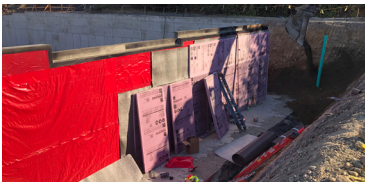
“We appreciated that E.Protect was uncomplicated, fast and easy to install compared to some of the other systems we’ve used.”

Dave Flynn  
Cornerstone  
General Contractors



## Fast Install of E.Protect System Ideal for Multi-Phased Expansion Project

Newport High School in Bellevue WA, is experiencing a multi-phase modernization and expansion project. Work will include approximately 145,000 square feet of additional buildings, and around 40,000 square feet of upgrades. The school will remain in operation during construction with defined work areas for construction in each phase. The project will also include site work with parking, fields, and plaza areas as well as street frontage work.



**Project Size:** 5,000 SF  
**Application:** Waterproofing  
**General Contractor:** Cornerstone  
**Installer:** Lizard Waterproofing  
**System:** E.Protect

The school's lower level is situated twelve feet below grade and in the water table. EPRO's E.Protect was used to protect against water ingress and ensure that the elevator pit remained dry. With very tight schedules, speed of installation and reliability were key.

“We applied the system onto green concrete,” explains Ken Betts, Lizard Waterproofing, the EPRO Installer. “And we were also trying to make a very tight schedule, even though this was a relatively straightforward project. Like other systems in

Installation of E.Protect in the elevator pit.

To the left, green concrete curing while E.Protect is being applied. E.Spray can be applied to "green" concrete.



EPRO's product range, E.Protect was quick and easy to apply."

Dave Flynn, President of Cornerstone General Contractors, adds, "We appreciated that E.Protect was uncomplicated, fast and easy to install compared to some of the other systems we've used."

This is a three-year construction project, and the expected completion date is August 2026. The project General Contractor is Cornerstone, the building envelope specialist is Wetherholt, and the architect is NAC Architecture. Lizard Waterproofing installed the E.Protect system.